

14 Northwoods Road, Radnor, PA 19087-

Chapter's Website: [www.ValleyForgeARS.org](http://www.ValleyForgeARS.org)

## **NEWSLETTER**                      *January / February 2019*

Unless specified otherwise, meetings are at Jenkins Arboretum in Devon

### **Calendar at a Glance**

- Jan 20 (Sun.)**                      **2:00 pm, Dr. Peter Zale, "A Century of Rhododendrons at Longwood Gardens"**  
**Feb. 17(Sun.)**                      **2:00 pm, Joe Klimavicz at Uwchlan, "Hybridizing Evergreen Azaleas"**  
**March 2-10**                              **(Sat to Sun) Philadelphia Flower Show "Flower Power"**  
**March 21 (Thu.)**                      **7:30 pm, Andrew Schenck "Nursery Production Techniques"**  
**April 13 (Sat.)**                      **Greater Phila. Chap. Banquet Sunnybrook Golf Club, Karl Garcens III**  
**May 3-5**                                      **Valley Forge Chapter's Plant Sale at Jenkins Arboretum (Fri to Sun.)**  
**May 15-19**                                  **ARS 2019 Philadelphia Convention at The Desmond Malvern**  
**June 30 (Sun.)**                      **Annual Chapter Meeting and Picnic**  
**August 18 (Sun.)**                      **District 8 Cuttings Exchange and Auction**

### **President's Message**

Once again, we finished our season with two outstanding presentations. Our October meeting featured Heather Saunders, President of the Tyler Arboretum Board of Trustees, who gave an informative presentation on what's going on at Tyler outside the Wister Rhododendron Garden.

Our November Banquet at St. David's Golf Club was also a delightful event. As always, we have Kathy Woehl to thank for arranging our banquet and Kathy always does a great job - **Thanks Again Kathy!!!** We were honored to have Dr. Harold Sweetman as our speaker this year. As most of us are aware, Harold will be retiring and stepping down in 2019 as Executive Director of Jenkins Arboretum. He gave an excellent presentation on the history of Jenkins Arboretum and his own thirty plus years developing it into a world class botanical garden, a true "Love Story" as he describes it.

No surprise, 2019 will be an eventful year for the Valley Forge Chapter. We begin the year at Jenkins Arboretum on January 20<sup>th</sup> at 2:00 with a presentation by Dr. Peter Zale, Associate Director, Conservation, Plant Breeding and Collections at

Longwood Gardens. Dr. Zale will talk about "A Century of Rhododendrons at Longwood Gardens." On February 17<sup>th</sup> at 2:00, our annual joint meeting with the Greater Philadelphia Chapter will again be held at the Uwchlan Friends Meeting House in Lionville. This year we welcome Joseph Klimavicz, an accomplished hybridizer, who will talk about hybridizing evergreen azaleas. On March 21<sup>st</sup> at 7:30 we return to Jenkins to hear Andy Schenck, nursery manager at Sam Brown's Wholesale Nursery in Malvern, discuss "Nursery Production Techniques: From a Grower's Perspective."

Looking for a great New Year's Resolution, here's one: Mark your calendar to attend our events, pass the word about rhododendrons and the Valley Forge Chapter and bring a friend or two along to our meetings.

Wishing everyone a very Happy and Healthy 2019.

Sincerely,

**Jerry O'Dell (610) 608-2018,**

[westdell@verizon.net](mailto:westdell@verizon.net)

**VF ARS website:** [www.ValleyForgeARS.org](http://www.ValleyForgeARS.org)

**On January 20, 2019, (Sunday.) at Jenkins at 2:00 pm:**

**Speaker: Dr. Peter Zale:**

**“A Century of Rhododendrons at Longwood Gardens”**

Peter Zale, PhD earned his doctoral degree from The Ohio State University where he studied plant germplasm collection development, breeding and genetics. As Associate Director, Conservation, Plant Breeding and Collections, at Longwood Gardens he is responsible for curatorial activities, the plant breeding program, the plant exploration program, and the recently initiated plant conservation program focused on propagating and conserving rare native orchids. He has published over 20 articles in trade, specialist, and peer-reviewed journals and designed and participated in over 20 plant exploration expeditions throughout the United States, Japan, Vietnam, Myanmar, the Republic of Georgia and Azerbaijan. He is an avid home gardener and plant collector with an interest in a wide variety of rare geophytes, hardy herbaceous and woody plants, including Rhododendron and a variety of unusual Ericaceous taxa.



Rhododendrons are interwoven into the history of Longwood Gardens; the evolution of this collection and its uses have evolved in tandem with the various needs and directions of the garden over the last 100+ years. When founder P.S. du Pont purchased the property where he created what we now recognize as Longwood Gardens in 1906, he followed horticultural trends and embraced rhododendrons as both garden and conservatory plants. As his private garden became a public garden in the mid-1950's, this interest continued and was emphasized

in Plant Exploration program initiatives and to highlight the best selections from the best hybridizers of the time. Today, rhododendrons continue to be important to the gardens and the use and appreciation of these plants continues to evolve and be refined. Join Peter for photographically rich presentation detailing the trends in uses of rhododendrons at Longwood Gardens, some of the interesting stories that have become part of the lure of Longwood Gardens and his own experience with rhododendrons in field and in his garden

---

**On February 17 (Sunday), 2:00 pm at Uwchlan Quaker Meeting House**  
**Joseph Klimavicz: “Hybridizing Evergreen Azaleas”**

Joe Klimavicz, with the help of his daughters, has been developing exciting new hybrid evergreen azaleas. Many are named and registered. Joe Klimavicz has been an avid hybridizer of fine evergreen azaleas since the late 1980s. He carries out his active program in the back yard of his one-third acre home in Vienna, Virginia. This garden is an example of highly intensive cultivation.

Each year, Joe makes five to ten crosses and raises 500-1000 new hybrids that he moves out of his basement and into his cold frames for the growing season. He raises most of his plants in a one-gallon size, but admits that he eventually throws 99% of them away, saving



only the very best of each cross for further evaluation and breeding, or perhaps a prestigious spot in his garden. The Klimavicz hybridization program is aimed at developing

sturdier varieties that are better able to survive neglect. Specific hybridization objectives include a plant that is hardy, vigorous, disease and insect resistant, floriferous and has a

flower that is long lasting and bright in color. *The photo is of Joe's azalea "Caitlin" named after his daughter Caitlin.*

**Refreshments** will be provided by the Greater Philadelphia and Valley Forge chapters

### **Directions to Uwchlan Meeting House, 5 N. Village Ave., Exton, PA 19341**

**From the Exton Mall** at Rt. 100 and Lincoln Highway (Bus. US 30): Go north on Rt. 100 for 2.9 miles, turn left on Rt. 113, Uwchlan Ave. and go 0.4 miles, turn right onto Eagleview Blvd. (at 2nd light from Rte. 100), make a right and then another right at Dowlin Forge Rd. (2nd light from Rte. 113), and come in to the Meeting House.

**From the Pennsylvania Turnpike:** Take Exit 312 at Rt. 100: Go south on Rt. 100 for 1 mile, turn right onto Rt. 113, Uwchlan Ave. and go for 0.4 miles, then turn right onto Eagleview Blvd. (2nd light from Rte. 100), make a right and then another right at Dowlin Forge Rd. (the 2nd light from Rte. 113), and come in to the Meeting House.

---

**On March 21, 2019, (Thursday) at Jenkins at 7:30 pm:**

**Speaker: Andrew Schenck, Sam Browns Wholesale Nursery:**

#### **"Nursery Production Techniques: From A Grower's Perspective"**

Andrew Schenck received his BS in Ornamental Horticulture from the University of Delaware. Since then he has a 28 year career in Nursery management and become a recognized expert on rare and unusual plants. He works for Sam Browns Wholesale Nursery and is active in the Delaware Center for Horticulture.

When landscape plants fail, it can be due to how they were grown, shipped, or planted. Learn

about nursery production and what we can do to help establish nursery grown plants in the landscape. Andy will discuss production methods used in the nursery industry, from propagation techniques to digging, and preparing plants for sale. He will discuss techniques including bud and top grafting, and will highlight some of the problems common in nursery stock.

---

### **The Philadelphia Flower Show Wants You**

"*Flower Power*" is the theme of the 2019 Philadelphia Flower Show. ARS members are needed to set up the exhibit and to serve as docents during the show, which runs from Saturday, March 2, through Sunday, March 10. Set-up is Tuesday, Feb. 26, and it involves minimal heavy lifting. It's great fun to be able to wander the floor of the convention center to see the other exhibits being installed. (Tip: the set-up badge will get you into the center through Thursday afternoon, by which point most exhibits will be close to complete.)

Docents staff the exhibit for a four-hour morning, afternoon or evening shift, and are

welcome to spend the rest of the day taking in the show. Translate: it's free admission (rather than \$30 and up per person). What do the docents do? Answer questions and tout rhododendrons (as we do all the time already).

While the Greater Philadelphia Chapter takes the lead on creating the exhibit, all ARS members in the area are welcome and invited to join set-up and/or take a docent shift.

For set-up, contact Linda Hartnett ([lindahartnett@gmail.com](mailto:lindahartnett@gmail.com); 215-287-0731).

For docent scheduling, contact Michael Mills ([mmm19119@gmail.com](mailto:mmm19119@gmail.com); 215-527-7145)



## Plant Labels are available for Chapter Members

In cooperation with Jenkins Arboretum & Gardens, plant labels are made for VF ARS members from January through March. If you have any questions, please contact Steve Wright ([steve@jenkinsarboretum.org](mailto:steve@jenkinsarboretum.org)).

**Eligibility:** Labels will be made **only** for members and only for their **own use**. The sequence of orders processed will give priority to active members.

**Description:** The product is a permanent, laser-engraved, black anodized aluminum plant label. Each will measure  $\frac{3}{4}$  inches wide by 3 inches long and will come with rounded corners and a pre-punched hole for hanging. Hanging wire is the responsibility of the member (small diameter bell wire is recommended).

**Quantity:** 120 labels maximum per order/member.

**Cost: \$30.00 for 1 to 40 labels, \$50 for 41 to 80 labels, and \$70 for 81 to 120 labels.** Checks should be made out to “Valley Forge Chapter, ARS”, and the money will be passed on to Jenkins.

### Instructions for submitting:

Create a document, preferably in Microsoft Word or similar program, that lists all plant tags to be made. Be sure to write the names *exactly* as you would like them to appear on the label – capitalization, spelling, quotes, etc. must be carefully reviewed before submission. Jenkins staff will review the document, recommend edits, and confirm those edits before any label-making will take place. For single-line labels, the list is simple. If double-

line labels are desired, simply put the second line in parentheses.

Single Line Examples:

- R. mucronulatum
- R. x ‘Hershey’s Red’
- ‘Koromo Shikibu’

Double Line Examples:

- R. fortunei (‘Lushan’)
- R. x ‘PJM’ (Weston Hybrid)
- ‘Anna Kehr’ (Kehr Hybrid)

### Notes:

- 1) No line on a plant label can be longer than 26 characters (including spaces).
- 2) The format is yours, i.e., it may be ‘P.J.M.’ or just P.J.M. Plant names should not be abbreviated.

**Checking label information:** After you have prepared your list (as outlined above), thoroughly check and recheck using your own resources. As mentioned earlier, the Jenkins staff will thoroughly review and offer suggested modifications, but it would be very helpful to have someone else give your list a check ahead of time. It cannot be emphasized enough how important it is to check the labels for accuracy as they cannot be corrected once engraved. Inaccuracies may pass on false information on numerous occasions (plant sales, flower/truss shows, cuttings exchanges, garden tours).

**Engraving label information:** The final plant list should be emailed to Steve Wright at: [steve@jenkinsarboretum.org](mailto:steve@jenkinsarboretum.org), with ‘metal plant labels’ in the subject line.



**ARSStore.org**

Where every purchase benefits the American Rhododendron Society

*Using ARSStore.org is now Quick ‘n Easy*

<a href="https://www.amazon.com/ARSStore.org">Amazon.ARSStore.org</a>	
<a href="https://www.target.com/ARSStore.org">Target.ARSStore.org</a>	
<a href="https://www.walmart.com/ARSStore.org">Walmart.ARSStore.org</a>	

After you use one of these links, when you start typing it again, some browsers will fill in the link automatically.

# ARS 2019 Convention at Desmond Malvern, PA

Join our [email list](#) for alerts about changes and updates.

Save the dates, May 15 to 19, 2019

Registration is open for [ARS 2019 Convention](#)

*Grand gardens and seminal events in American rhododendron culture have been part of Philadelphia for almost 300 years. Storied estates transformed into sumptuous public gardens – Longwood, Winterthur, Morris Arboretum and many more – have consistently relied on rhododendrons, going back to John Bartram's colonial discoveries. With so many alluring gardens to visit, the region takes pride in its status as America's Garden Capital. Come discover the Philadelphia story, rhododendron version.*

**Wednesday, May 15, 2019:** We will have a pre-tour on Wednesday to [Chanticleer](#) and [Winterthur](#). A luxury coach, admissions, guided garden walks, and lunch in Winterthur's cafe are included.

**Thursday, May 16, 2019:** There are two tours. The first tour on Thursday is to [Tyler Arboretum](#) and lunch in their newly renovated barn. A luxury coach, admission, lunch, and guided tours of the Wister Rhododendron Garden are included with the tour. The second tour on Thursday is to [Jenkins Arboretum and Gardens](#) for a Wine & Dine Garden Party and visit of Jenkins rhododendron and azalea gardens. A luxury coach and the Wine and Dine Garden Party are included with the tour. There will be no program Thursday evening as the plant sale opens after we return from Jenkins.

**Friday, May 17, 2019:** Friday features a full day tour to [Mt. Cuba Center](#), [Longwood Gardens](#), and [Wayne Guymon's WynEden](#). A luxury coach, picnic lunch, all admissions and guided tours are included with the tour. Dinner and the evening program will be at the [American Helicopter Museum](#) in the evening. There will be a shuttle bus from the hotel. Admission to the American Helicopter Museum, dinner, and the shuttle bus are included with the dinner. The speaker will be Dick Murcott, "*Philadelphia: Adopted Home of America's First Hybrid Rhododendrons.*" Dick has been hybridizing rhododendrons on Long Island for 55 years.

**Saturday, May 18, 2019:** Saturday features a full day tour to [Morris Arboretum](#), [Stoneleigh](#), the [Farley's Garden](#), and [Perc Moser's Garden](#). A luxury coach, admissions, and a buffet lunch at Morris are included with the tour. The banquet with open bar, ARS annual meeting, and keynote speech will be at [The Desmond](#) in the evening. The keynote speaker will be Jenny Rose Carey, "*Philadelphia: America's Garden City.*" Carey is a renowned gardener, educator, historian, author and senior director at Pennsylvania Horticultural Society's Meadowbrook estate garden.

**Sunday, May 19, 2019:** "Coffee With The President" first and then Breeders Roundtable are in the morning in the amphitheater at the Desmond. We will have a list of open private gardens for people to visit on their own in the afternoon. The public plant sale continues at 9 AM. The plant sale closes at noon on Sunday.

[The registration form and details are at ARS2019.org](#)

**Convention registration is open to the public.** In order to participate in **any** Convention activity a person **must be registered** for the Convention. The only exception is the plant sale will be open to unregistered members and the general public on Saturday 10am – 5 pm and on Sunday 9am - noon.

**The Plant Sale:** The plant sale opens Thursday after we return from the banquet at the American Helicopter Museum. On Thursday evening and Friday, the plant sale will only be open to Convention registrants and at the scheduled times.

## ARS 2019 Convention Daily Schedule

### Tuesday, May 14, 2019

- 7:00 pm ARS Executive Committee
- 4:00 pm-9:00 pm Registration Desk open

### Wednesday, May 15, 2019

- 7:30 am-10:00 am Registration Desk open
- 8:30 am-4:30 pm\* Tour, with lunch: Chanticleer, Winterthur
- 3:00 pm-9:00 pm Registration Desk open
- 5:00 pm-9:00 pm ARS Board of Directors Meeting, supper available on registration form

### Thursday, May 16, 2019

- 8:30 am-9:00 pm Registration Desk open
- 10:15 am-3:15 pm\* Tour, with lunch: Tyler Arboretum
- 2:00 pm-4:00 pm Photo and Flower Show entries accepted
- 4:15 pm-7:45 pm\* Tour with Wine & Dine Party at Jenkins Arboretum
- 8:00 pm-10:00 pm Plant sale opens after return from Jenkins Arboretum
- 8:00 pm-9:00 pm Photo and Flower Show entries accepted (final deadline)

### Friday, May 17, 2019

- 7:30 am-5:30 pm Registration Desk open
- 8:30 am-4:30 pm\* Tour, with lunch: Mt. Center, Longwood Gardens, Guymon's WynEden
- 4:00 pm-5:00 pm Photo Show and Flower Show open
- 4:00 pm-5:00 pm Plant sale
- 5:15 pm-8:30 pm\* Tour and program at American Helicopter Museum
- 9:00 pm-10:30 pm Plant sale after return from American Helicopter Museum
- 9:00 pm-10:30 pm Photo Show and Flower Show open
- 9:00 pm-10:00 pm Registration Desk open

### Saturday, May 18, 2019

- 7:30 am-5:30 pm Registration Desk open
- 8:30 am-4:30 pm\* Tour, with lunch: Morris Arboretum, Stoneleigh, Farley & Moser gardens
- 10:00 am-5:00 pm Public plant sale
- 5:30 pm-6:30 pm Social hour at the Desmond
- 6:30 pm -8:45 pm Banquet at the Desmond
- 9:00 pm-10:00 pm Plant sale opens after banquet

### Sunday, May 19, 2019

- 9:00 am-noon Public plant sale
- 9:00 am-9:45 am Coffee With the President
- 10:00 am-noon Hybridizers' Roundtable
- 1:00 pm-5:00 pm Self-guided visits to private and public gardens – list will be available

\* Planned return of bus to hotel

# *The Philadelphia Story* Rhododendrons in America's Garden Capital

Annual ARS Convention – Philadelphia, May 16-19

Registration Deadlines: Tours and standard rate, April 10, 2019; final deadline, May 7, 2019

Go to [ars2019.org](http://ars2019.org) to download this form.

Name \_\_\_\_\_ Phone \_\_\_\_\_  
 Address \_\_\_\_\_ Email \_\_\_\_\_  
 City \_\_\_\_\_ State \_\_\_\_\_ Country \_\_\_\_\_ Postal Code \_\_\_\_\_

		#1 Name on Badge	Primary ARS Chapter:				
		Dietary Restrictions					
		#2 Name on Badge	Primary ARS Chapter:				
		Dietary Restrictions					
#1	#2	DAY	ACTIVITY	DESCRIPTION	NUMBER	EACH	
			Register	Standard registration (deadline April 10, 2019)		x \$50 =	\$
			Register	Late Registration (April 11- May 7, 2019)		x \$60 =	\$
		Wed., May 15	Board Meeting	ARS Board of Directors Meeting Supper		x \$25 =	\$
		Wed., May 15	Pre-Conv. tour	Chanticleer and Winterthur Gardens. Lunch		x \$65 =	\$
		Thur., May 16	Midday tour	Tyler Arboretum Tour. Lunch included. (Use this line ONLY if you are not going on the Jenkins tour.)		x \$45 =	\$
		Thur., May 16	Evening tour & garden	Jenkins Arboretum, Wine and Dine. (Use this line ONLY if you are not going on the Tyler tour.)		x \$55 =	\$
		Thur., May 16	Thursday combo	Both Tyler and Jenkins tours. Lunch and evening Wine and Dine included. (\$10 discount for both)		x \$90 =	\$
		Fri., May 17	Southern tour	Mt. Cuba Center, Longwood Gardens, Guymon's WynEden. Lunch included.		x \$65 =	\$
		Fri., May 17	Buffet dinner	American Helicopter Museum Buffet dinner, Dick Murcott presentation.		x \$50 =	\$
		Sat., May 18	Northern tour	Morris Arboretum, Stoneleigh, Farley and Moser gardens. Lunch included.		x \$60 =	\$
		Sat., May 18	Banquet with open bar	Desmond Hotel. Jenny Rose Carey presentation. Choose: Salmon Beef Vegetarian		x \$70 =	\$
To ensure a space on tours, your registration must be received by April 10, 2019. After April 10, Waiting List applies.						TOTAL	\$

Check enclosed (U.S. funds only), payable to "Greater Philadelphia ARS".

Visa, MC # \_\_\_\_\_ Expiration date \_\_\_\_\_ / \_\_\_\_\_ Security code \_\_\_\_\_

Name as appears on credit card: \_\_\_\_\_ Signature \_\_\_\_\_

Please make hotel reservations directly with  
**The Desmond: Double Tree by Hilton**  
 1 Liberty Blvd., Malvern, PA 19355  
<http://www.desmondgv.com/>  
 610-296-9800 or 800-575-1776  
 Convention rate is \$149 per night, plus tax.  
 Use group code: **RHO**

Mail this form to:  
 Linda Hartnett, ARS 2019 Registrar  
 1070 Beech Hollow Rd.  
 Ambler, PA 19002  
 610-940-4978  
[registrar@ars2019.org](mailto:registrar@ars2019.org)



# *The Philadelphia Story* 19

## Rhododendrons In America's Garden Capital

### The 2019 ARS Convention Needs You!



The 4 ARS chapters in District 8, Greater Philadelphia, Lehigh Valley, Susquehanna Valley & Valley Forge, will host the ARS 2019 Convention from Wednesday May 15 to Sunday, May 19, 2019, at the Desmond Hotel in Malvern. Details are at [ARS2019.org](http://ARS2019.org).

We need volunteers from all 4 chapters to help welcome ARS members coming from all over the world. To volunteer contact volunteer coordinator Steve Wright [steve@jenkinsarboretum.org](mailto:steve@jenkinsarboretum.org) or either Karel Bernady at [bernadk@verizon.net](mailto:bernadk@verizon.net) or Steve Henning at [rhodyman@earthlink.net](mailto:rhodyman@earthlink.net), the co-chairs. It would help if you can tell us your preferences and which days you can help.

Here are some areas where we need volunteers. **Please check to see where you can help!**

**Registration:** Linda Hartnett needs help handling registration, welcoming registrants, and providing hospitality during the convention.

**Bus Tours:** Steve Henning needs help loading the buses and bus captains on each bus.

**Tour Lunches:** Debby Schmidt needs help setting up box lunches for the Longwood Gardens tour and helping with catered lunches.

**Banquets:** Debby Schmidt needs helpers preparing for the banquets.

**Sale Plants:** Karel Bernady can use helpers in prepping the plants and getting them to the sale.

**Plant Sale:** Joan Warren and Ron Rabideau need help setting up and running the plant sale.

**Plant Inspection:** We could use a person who has worked with the plant inspectors for Phytosanitary inspections and certificates.

**Flower Show:** Bob Smetana needs helpers to take-in, arrange & care for flowers in the show.

**Photo Show:** Bob Smetana needs helpers to take-in, arrange & care for photos in the show.

**Auction(s):** We need people to care for the auction items and help with the auction(s).

**Sponsorships:** Maris Ogg needs help working with our sponsors and stuffing goody bags.

**AV Equipment:** Jerry O'Dell needs help to work with our speakers and the AV Systems.

**Other Help:** If you know of some other way you can help, please let us know.

Visit the Convention Website at [ARS2019.org](http://ARS2019.org)

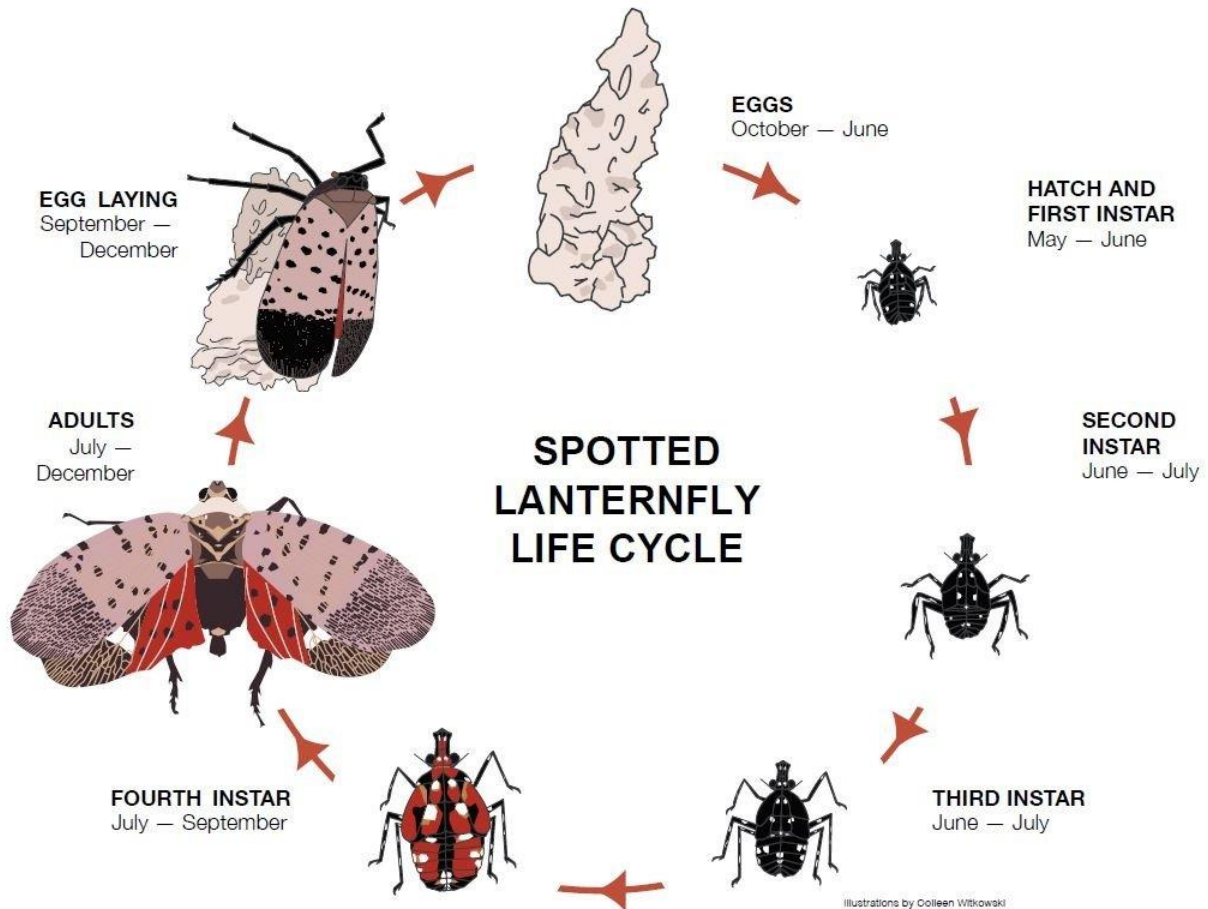
And the Convention Committee Website at [ARSSStore.org/ARS2019/](http://ARSSStore.org/ARS2019/)

Help District 8 Welcome the 2019 ARS Convention to America's Garden Capital!

[Volunteer For The ARS 2019 Convention!](#)



## Update on the Spotted Lanternfly in Pennsylvania.

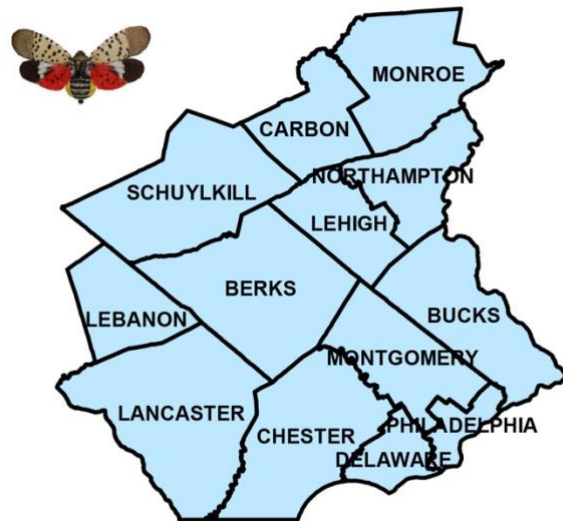


First spotted in Berks County in 2014, the Spotted Lantern Fly (SLF) quarantine has grown to 13 counties in SE PA. The chief control measure appears to be to remove all female Ailanthus trees and leave just a few male Ailanthus trees. Then sticky traps are placed on the remaining male Ailanthus. The SLF seem to need to be near Ailanthus trees before they lay eggs. They are extremely mobile in the adult phase. However, they are extremely clumsy climbers in all phases and frequently fall and climb back up trees, so the sticky traps are very effective.

They will lay egg masses on any fixed objects, rocks, cars, trees, picnic tables, firewood, etc. They are mobile, but their mobility is greatly enhanced when the objects they lay their egg masses on are moved. The fact they are hitchhikers is the most troublesome problem in their control.

### Spotted Lanternfly Quarantine Map

#### Counties Under Quarantine



**American Rhododendron Society  
Valley Forge Chapter  
14 Northwoods Rd  
Radnor, PA 19087**

**FIRST-CLASS MAIL**



**NEWSLETTER**

**January / February 2019**

*Where every purchase benefits the  
American Rhododendron Society*

<b>In This Issue</b>	<b>Officers and Committees:</b>
<p>Page 2 <b>Jan. 20, Dr. Peter Zale, “A Century of Rhododendrons at Longwood.”</b> <i>Feb. 17, At Uwchlan: Joe Klimavicz: “Hybridizing Evergreen Azaleas”</i></p> <p>Page 3 <b>Mar. 21, 2019: Andrew Schenck, Sam Browns Wholesale Nursery: “Nursery Production Techniques: From A Grower’s Perspective”</b> <i>Philadelphia Flower Show Wants You</i></p> <p>Page 4 <b>Plant Labels are available for Members</b></p> <p>Page 5 <b>ARS 2019 Convention at The Desmond</b></p> <p>Page 6 <b>ARS 2019 Convention Daily Schedule</b></p> <p>Page 7 <b>ARS 2019 Conv. Registration Form</b></p> <p>Page 8 <b>ARS 2019 Convention Needs You</b></p> <p>Page 9 <b>Update on the Spotted Lanternfly</b></p> <p>ARS websites:  <a href="http://rhododendron.org">rhododendron.org</a>    <a href="http://ARSStore.org">ARSStore.org</a>  <a href="http://ARSOoffice.org">ARSOoffice.org</a>    <a href="http://ARS2019.org">ARS2019.org</a></p>	<p>President: Jerry O’Dell (610) 608-2018  Vice President: Alice Horton (610) 430-0196  Treasurer: Bob Smetana (610) 688-5249  Secretary: Joan Warren (484) 369-8103  Directors:  Perc Moser (‘18-‘21) (610) 525-3651  Kathy Woehl (‘18-‘21) (610) 688 9173  Bob Horton (‘17-‘20) (610) 430-0196  Michele Hawk (‘17-‘20) (610) 687-9120  Steve Wright (‘16-‘19) (267) 481-0175  Darlene Henning (‘16-‘19) (610) 987-6184  Membership: Darlene Henning (610) 987-6184  Newsletter Editor: Steve Henning (610) 987-6184  Plant Sale: Alice Horton (610) 430-0196  Plants-for-Members with Greater Philadelphia Chapter  Truss Show (VF): Debby Schmidt (610) 388-8573  Webmaster: Steve Henning (610) 987-6184  <b>VF Chapter’s web site: <a href="http://ValleyForgeARS.org">ValleyForgeARS.org</a></b></p>

Please contact us with email changes or if you receive this **newsletter** by letter carrier rather than email, even though you have e-mail. Please inform Steve Henning of any changes ([rhodyman@earthlink.net](mailto:rhodyman@earthlink.net)).